

Kings Landing

3420 Mildred Way,
Jacksonville, FL 32254
904-483-9099

Kings Landing is a vibrant community in Jacksonville, FL where comfort meets great value. New single-family homes now selling!

Amenities

Innovative multi-family homes with inspired amenities.

What's nearby

Located in the beautiful city of Jacksonville, FL.

Cinnabon

McDonald's

Frutastic Creations and
Bakery

RaceTrac

Pizza Hut

Flowers Bakery Outlet

Popeyes Louisiana Kitchen

Auntie Anne's

Church's Texas Chicken

Sammy Cakes

Circle K

Vic's Sandwich Shop

Durbin

3 bd . 2 ba . 1,438 ft²

Collier

3 bd . 2 ba . 1,440 ft²

Drexel

4 bd . 2 ba . 1,626 ft²

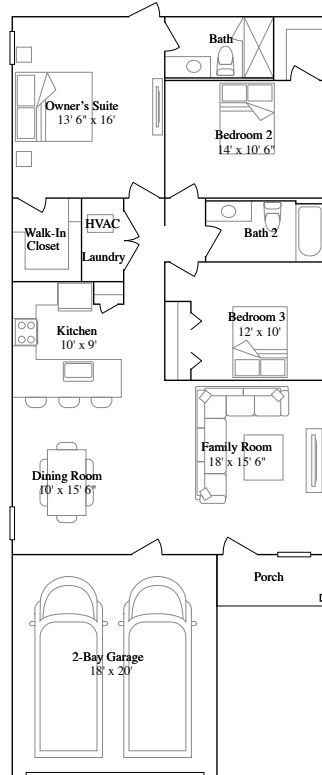
Ridley

4 bd . 2 ba . 1 half ba . 1,965 ft²

Durbin

3 bd . 2 ba . 1,438 ft²

1st Floor



Available Exteriors



Exterior HA

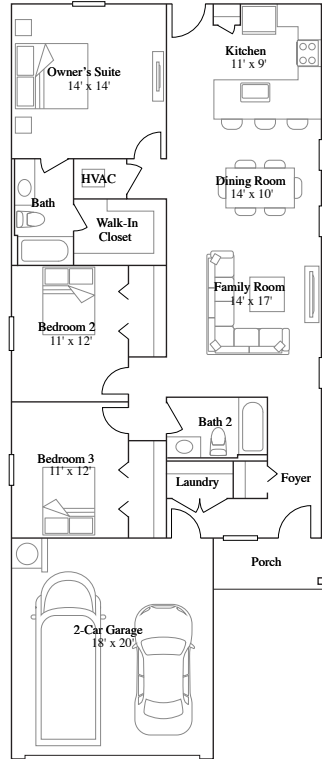


Exterior HB

Collier

3 bd . 2 ba . 1,440 ft²

1st Floor



Available Exteriors



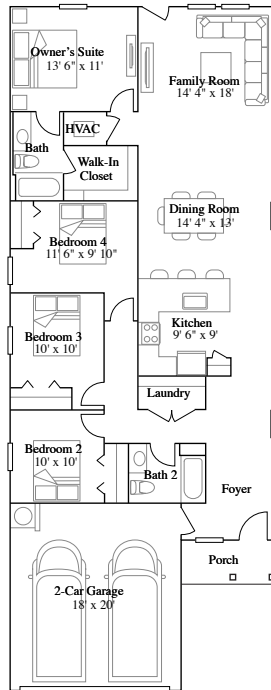
Exterior HA

Exterior HB

Drexel

4 bd . 2 ba . 1,626 ft²

1st Floor



Available Exteriors



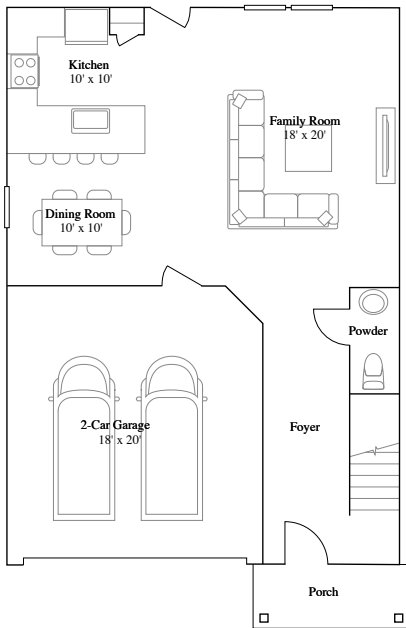
Exterior HA

Exterior HB

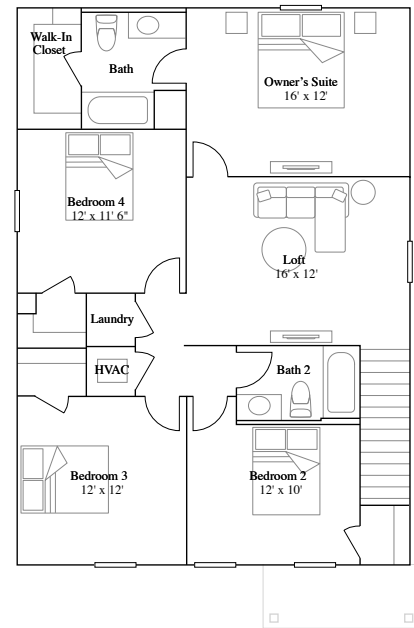
Ridley

4 bd . 2 ba . 1 half ba . 1,965 ft²

1st Floor



2nd Floor



Available Exteriors



Exterior HA



Exterior HB

Everything included

See all you can enjoy when everything's included

Kitchen

Frigidaire® stainless steel appliance package includes a range cooktop with a built-in microwave

Undermount stainless steel sink pairs with a Moen® Chateau faucet with pull-out spray

Frigidaire® stainless steel range

Frigidaire®; stainless steel microwave oven

Quartz countertops

Moen Chateau faucet with pull-out spray

36" recessed panel cabinetry

LED recessed lighting

ENERGY STAR® dishwasher

Owners Suite

Shower and bathtubs with 12"x12" wall tile surround

Walk-in closet with mesh shelving

Quartz countertops

Plate-glass vanity mirror in all bathrooms (per plan)

Moen® bath fixtures and faucets

Double sinks at vanity (per plan)

Walk-in shower with framed glass enclosure

Elongated comfort-height toilets with soft-close lids

Secondary Bathroom

3-piece fiberglass tub/wall surround

Quartz countertops

Plate-glass vanity mirror in all bathrooms (per plan)

Water-saving elongated toilet with soft-close lids

Moen® bath fixtures and faucets

Laundry

Wire-mesh shelving

LVP flooring

Interior

LVP flooring runs throughout the living room, kitchen, dining area and bathrooms

8' ceilings on first floor

LVP flooring in kitchen and bathrooms

Exterior

Concrete walkway, driveway, and entry

Sherwin-Williams® exterior paint

Low-maintenance vinyl windows

Insulated fiberglass six-panel front door

Eco-friendly landscape package

Full yard programmable irrigation system

Two exterior hose bibs

LED recessed lighting

R-30 ceiling insulation

Connectivity

Honeywell Home T6 Pro Z-Wave - smart thermostat

Energy Efficiency

Programmable thermostats

Energy-efficient low-E windows

R-30 ceiling insulation

Energy-efficient water heater tank

Services

myLennar (online assistant to help through the homebuying process)

Lennar Mortgage (financial services)

Lennar Title (title services)

Lennar Insurance Agency (home insurance)

Limited one-year warranty on workmanship

Dedicated Customer Care service and program

24-hour emergency customer service

Availability

Find the home that's right for you.

Prices and availability as of April 10, 2024. All subject to change.

Homesite	Price	Details	Plan	Address
0058	Priced at \$301,594	3 bd . 2 ba . 1,438 ft ²	Durbin	3424 Mildred Way
0060	Priced at \$314,494	3 bd . 2 ba . 1,440 ft ²	Collier	3432 Mildred Way
0011	Priced at \$326,584	4 bd . 2 ba . 1,626 ft ²	Drexel	3447 Mildred Way
0012	Priced at \$331,344	4 bd . 2 ba . 1 half ba . 1,965 ft ²	Ridley	3451 Mildred Way

Nearby schools

Public schools zoned for this community

Pickett Elementary School

Public PK, K-5
Duval County Public Schools

C+

Overall Niche Grade
[View on Niche.com](#)

Jean Ribault Middle School

Public 6-8
Duval County Public Schools

C-

Overall Niche Grade
[View on Niche.com](#)

Jean Ribault High School

Public 9-12
Duval County Public Schools

C-

Overall Niche Grade
[View on Niche.com](#)

Plan your visit

Community information

Location

3420 Mildred Way
Jacksonville, FL 32254

Hours

By appointment only.

Phone

904-483-9099

HOA & Tax information

Aprox monthly HOA fees - \$33.33

Approximate tax rate - 1.61%

Why Lennar

We take pride in providing the easiest way to buy a home.

Where you want to live

We understand how you want to live, and create homes in communities in some of the most sought-after cities across the county.

Something for everyone

We understand homebuilding, and people. Our homes cater to a variety of lifestyles, and reflect the culture and region in which they're built.

A simpler way to buy

Our family of companies can assist you with your mortgage, title and insurance needs - allowing you to save time and money.

Features, amenities, floor plans, elevations, and designs vary and are subject to changes or substitution without notice. Items shown are artist's renderings and may contain options that are not standard on all models or not included in the purchase price. Availability may vary. Sq. ft. and dimensions are estimated; actual sq. ft. and dimensions will differ. Garage/bay sizes may vary from home to home and may not accommodate all vehicles. This is not an offer in states where prior registration is required. Void where prohibited by law. Copyright © 2021 Lennar Corporation. Lennar and the Lennar logo are U.S. registered service marks or service marks of Lennar Corporation and/or its subsidiaries. Seller's Broker: Lennar Realty, Inc. Construction License(s): CGC1518166. Date 1/22



Copyright © 2023 Lennar Corporation. All right reserved.

Printed on 4/10/2024