

SilverLeaf is a master-planned community offering a range of modern single-family homes with resort-style amenities and a serene natural setting in St. Augustine, FL.

Amenities		What's nearby	
Innovative single family homes with inspired amenities.		Located in the beautiful city of St Augustine, FL.	
Swimming Pool	Tennis Court	Zaxby's Chicken Fingers & Buffalo Wings	World Golf Village "Residents Only" Neighborhood Park & Dog Park
Clubhouse	Trail	Rustica Earth Sea and Fire	Turner Home
Picnic Area	Pond	Rita's Italian Ice & Frozen Custard	Kalen Services Home Repairs
Dog Park		Mellow Mushroom St. Augustine - Murabella	Turner Ace Hardware World Golf Village
Splash Park		ARTz MIX	Mill Creek Crossing
Playground		Courtney Vista Park	Severts Tree Farm
Sport Court			

Silver Meadows Villas

Silver Meadows Villas is a collection of new single-family homes for sale at SilverLeaf, a masterplan community in St. Augustine, FL, with more than 8,500 acres of thoughtfully designed neighborhoods, commercial space and over 3,500 acres of natural preserves. Homeowners enjoy access to a wide selection of resort-style amenities including a state-of-the-art clubhouse surrounded by multiple pools, numerous sports courts and multi-use trails. Located five minutes from St. Augustine Premium Outlets and Publix Super Market, this community will also be served by quality A-rated schools to create a perfect family-friendly environment.

Floorplans

Sienna

3 bd . 2 ba . 1,623 ft²

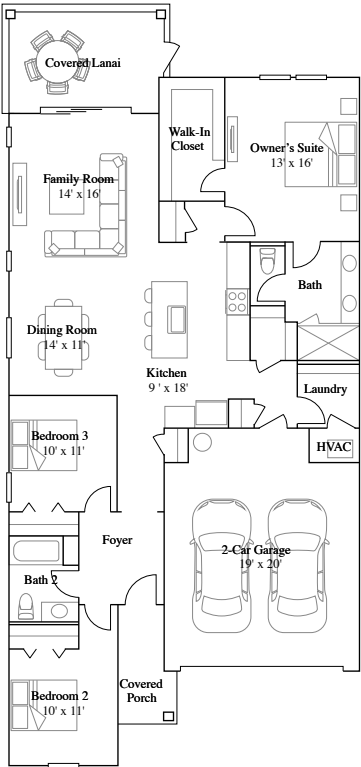
Topaz

3 bd . 2 ba . 1,891 ft²

Sienna

3 bd . 2 ba . 1,623 ft²

1st Floor



Available Exteriors



Exterior HE

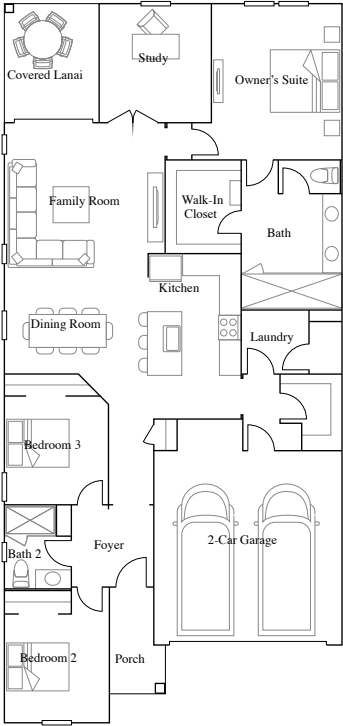


Exterior HF

Topaz

3 bd . 2 ba . 1,891 ft²

1st Floor



Available Exteriors



Exterior HE



Exterior HF

Silver Meadows 60s

Silver Meadows 60s is a collection of new single-family homes for sale at SilverLeaf, a masterplan community in St. Augustine, FL, with more than 8,500 acres of thoughtfully designed neighborhoods, commercial space and over 3,500 acres of natural preserves. Homeowners enjoy access to a wide selection of resort-style amenities including a state-of-the-art clubhouse surrounded by multiple pools, numerous sports courts and multi-use trails. Located five minutes from St. Augustine Premium Outlets and Publix Super Market, this community will also be served by quality A-rated schools to create a perfect family-friendly environment.

Floorplans

Tivoli
4 bd . 3 ba . 2,267 ft²

Princeton
4 bd . 2 ba . 2,268 ft²

Barton
4 bd . 3 ba . 2,404 ft²

Medallion
4 bd . 3 ba . 2,657 ft²

Patriot
4 bd . 3 ba . 1 half ba . 3,004 ft²

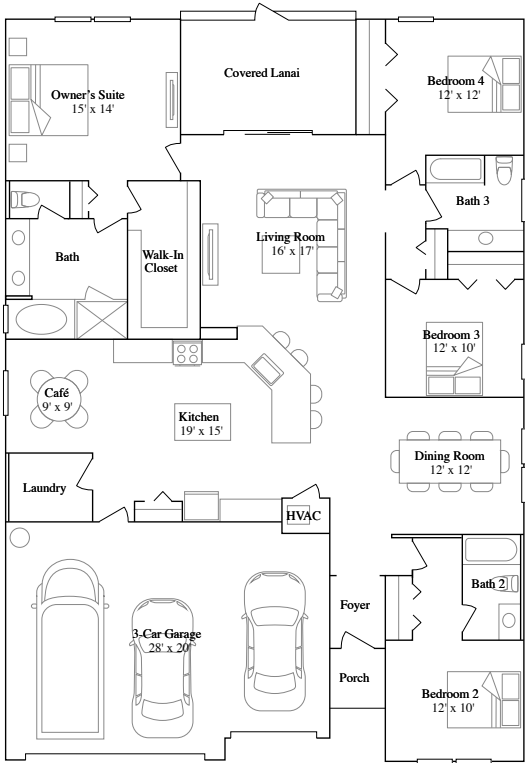
Medallion Bonus
4 bd . 4 ba . 3,152 ft²

Kingsley III
5 bd . 4 ba . 3,381 ft²

Tivoli

4 bd . 3 ba . 2,267 ft²

1st Floor



Available Exteriors



Exterior HA

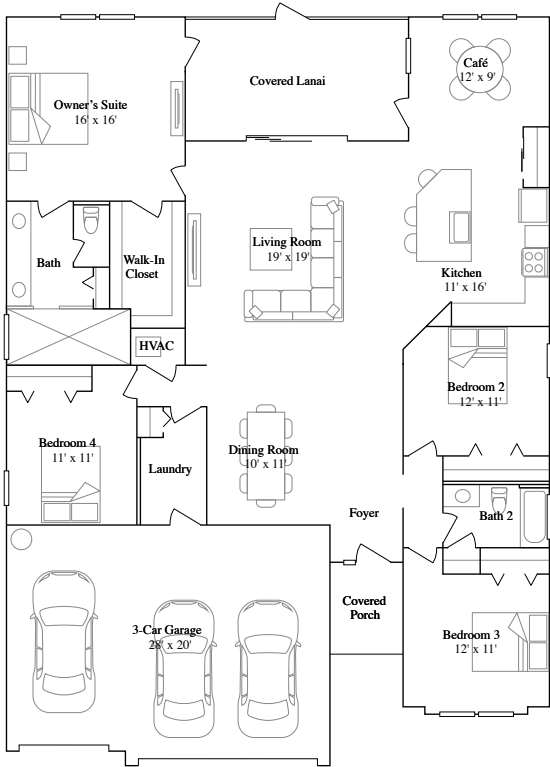


Exterior HB

Princeton

4 bd . 2 ba . 2,268 ft²

1st Floor



Available Exteriors



Exterior HA

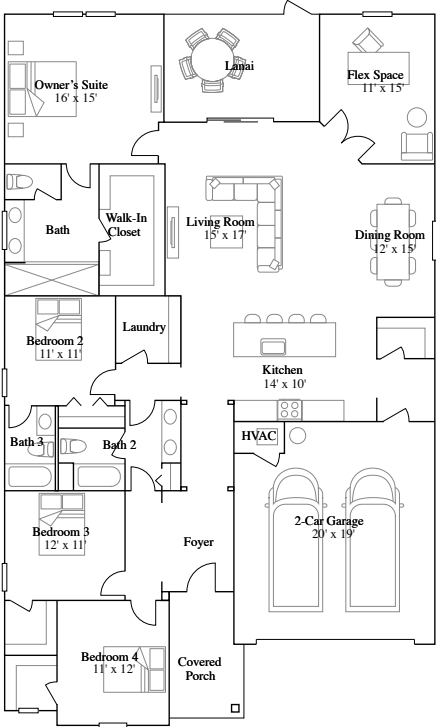


Exterior HB

Barton

4 bd . 3 ba . 2,404 ft²

1st Floor



Available Exteriors



Exterior HC

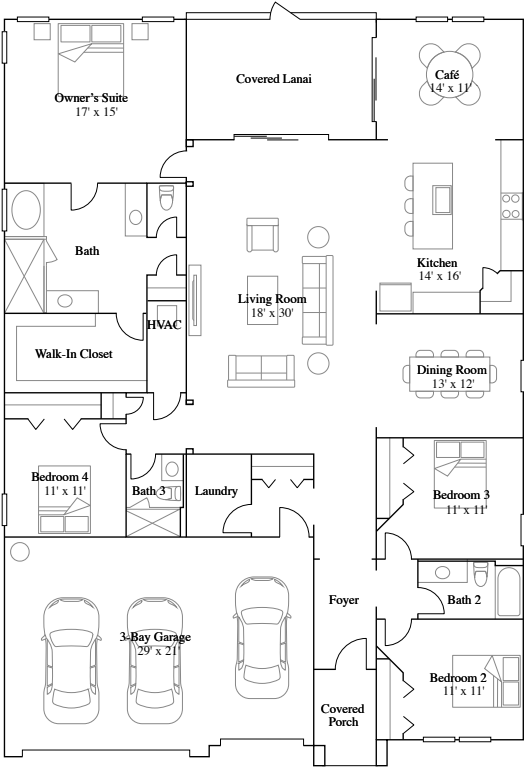


Exterior HH

Medallion

4 bd . 3 ba . 2,657 ft²

1st Floor



Available Exteriors



Exterior HA

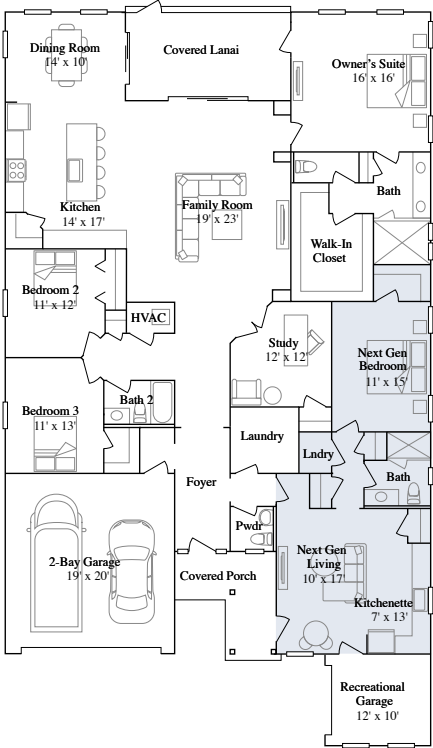


Exterior HA

Patriot

4 bd . 3 ba . 1 half ba . 3,004 ft²

1st Floor



Available Exteriors



Exterior HA

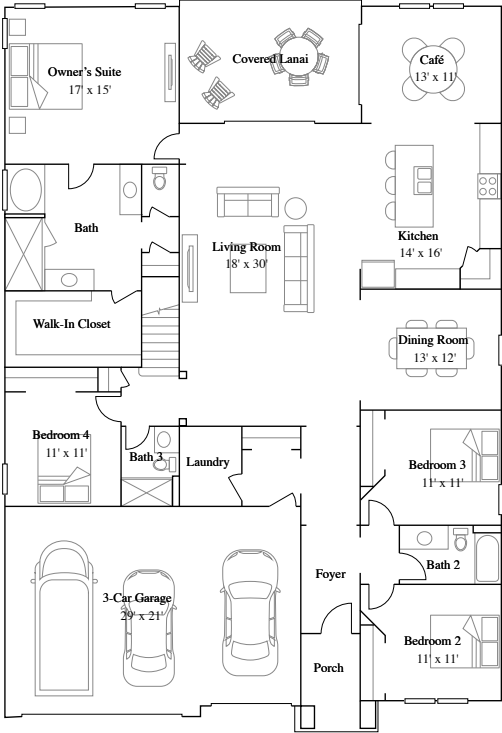


Exterior HB

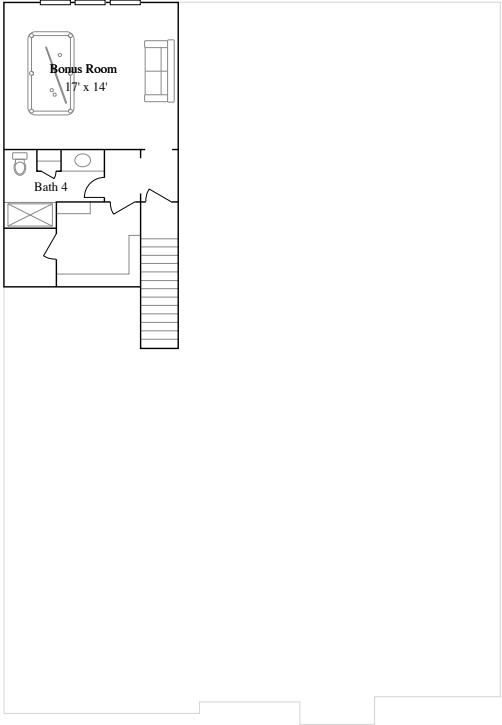
Medallion Bonus

4 bd . 4 ba . 3,152 ft²

1st Floor



2nd Floor



Available Exteriors

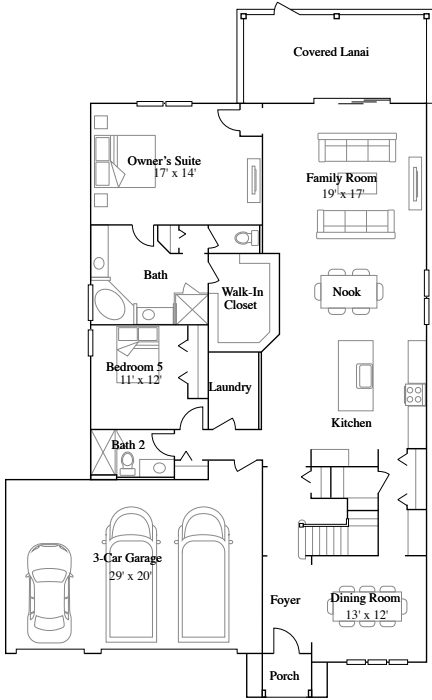


Exterior HA

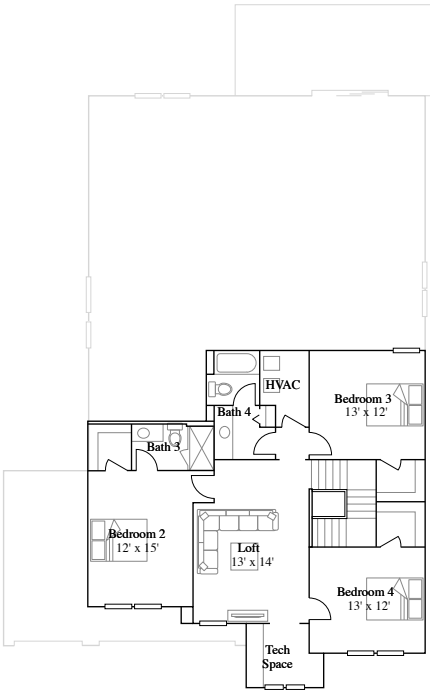
Kingsley III

5 bd . 4 ba . 3,381 ft²

1st Floor



2nd Floor



Available Exteriors



Exterior HA



Exterior HB

Silver Meadows 50s

Located in sunny St. Augustine, FL, Silver Meadows 50s is a collection of new single-family homes for sale at Silverleaf, a master-planned community. The community features over 8,500 acres of intentionally-designed neighborhoods, commercial space and trails, with more than 3,500 acres of natural preserves. The area enjoys A-rated schools with access to resort-style amenities and nearby shopping and entertainment for an ideal family-friendly environment.

Floorplans

TREVI

4 bd . 3 ba . 2,028 ft²

CHARLE

4 bd . 2 ba . 2,124 ft²

SIERRA

4 bd . 2 ba . 1 half ba . 2,295 ft²

BRIO

5 bd . 2 ba . 1 half ba . 2,358 ft²

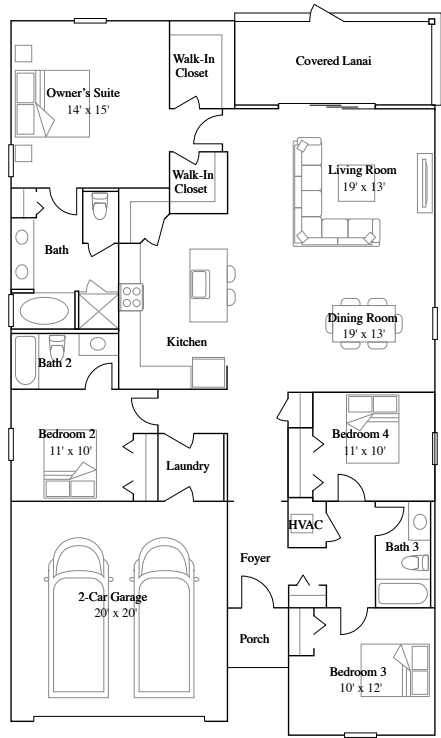
SIERRA BONUS

4 bd . 3 ba . 1 half ba . 2,663 ft²

TREVI

4 bd . 3 ba . 2,028 ft²

1st Floor



Available Exteriors



Exterior HA



Exterior HB

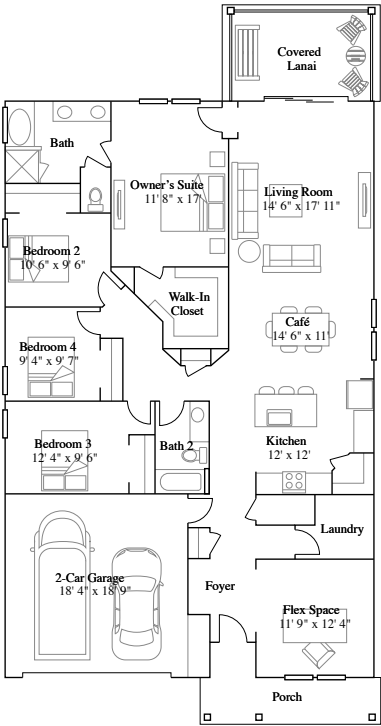


Exterior HP

CHARLE

4 bd . 2 ba . 2,124 ft²

1st Floor



Available Exteriors



Exterior HA

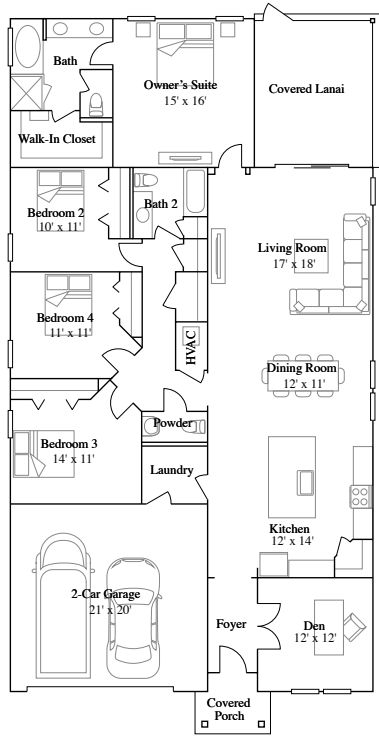


Exterior HB

SIERRA

4 bd . 2 ba . 1 half ba . 2,295 ft²

1st Floor



Available Exteriors



Exterior HA



Exterior HB

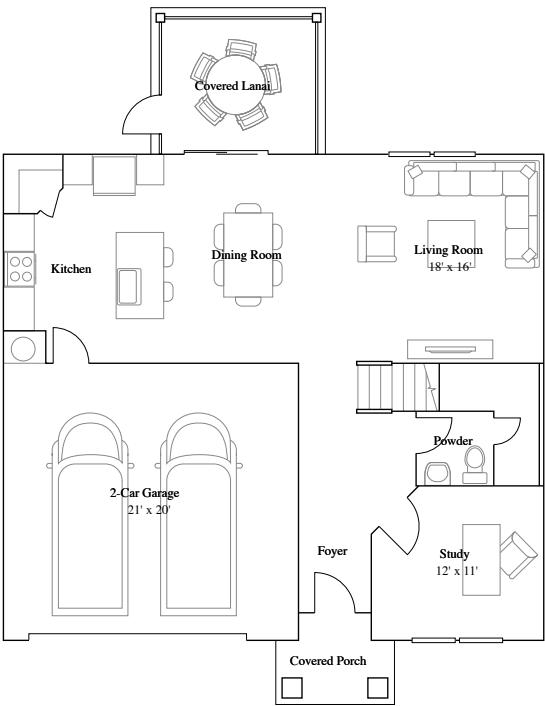


Exterior HP

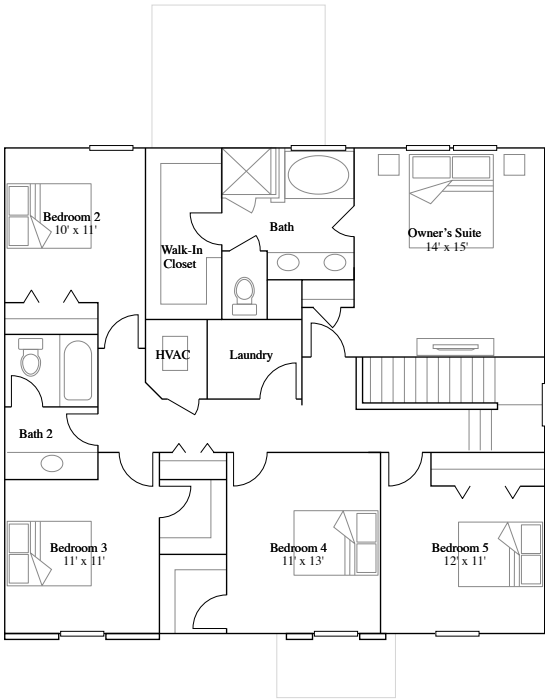
BRIO

5 bd . 2 ba . 1 half ba . 2,358 ft²

1st Floor



2nd Floor



Available Exteriors



Exterior HA

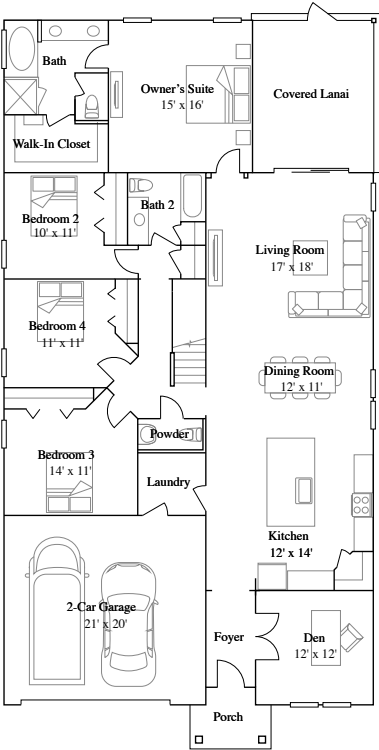


Exterior HB

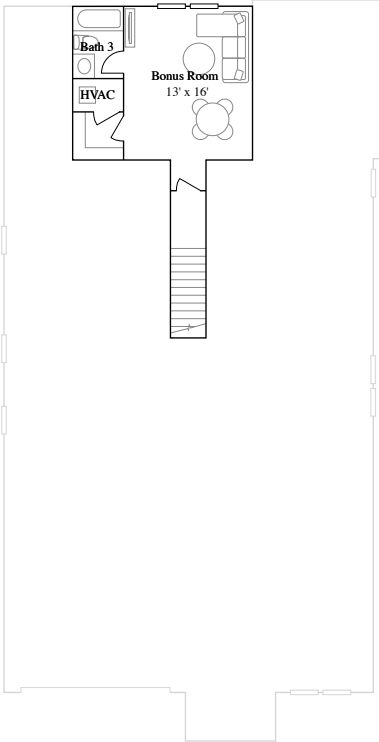
SIERRA BONUS

4 bd . 3 ba . 1 half ba . 2,663 ft²

1st Floor



2nd Floor



Available Exteriors



Exterior HA



Exterior HB



Exterior HP

Silver Landing 53s

Silver Landing 53s is a collection of new single-family homes for sale at SilverLeaf, a masterplan community in St. Augustine, FL, with more than 8,500 acres of thoughtfully designed neighborhoods, commercial space, trails and over 3,500 acres of natural preserves. From resort-style amenities to nearby shopping and entertainment opportunities, the area also boasts quality A-rated schools to create a perfect family-friendly environment.

Floorplans

TREVI

4 bd . 3 ba . 2,028 ft²

CHARLE

4 bd . 2 ba . 2,124 ft²

SIERRA

4 bd . 2 ba . 1 half ba . 2,295 ft²

BRIO

5 bd . 2 ba . 1 half ba . 2,358 ft²

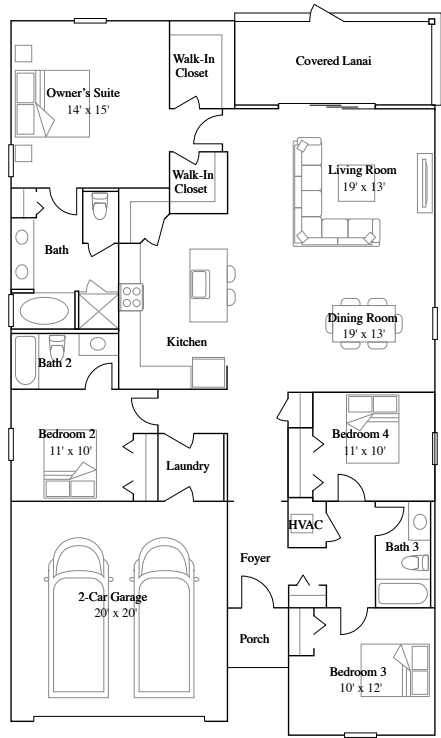
SIERRA BONUS

4 bd . 3 ba . 1 half ba . 2,663 ft²

TREVI

4 bd . 3 ba . 2,028 ft²

1st Floor



Available Exteriors



Exterior HA



Exterior HB

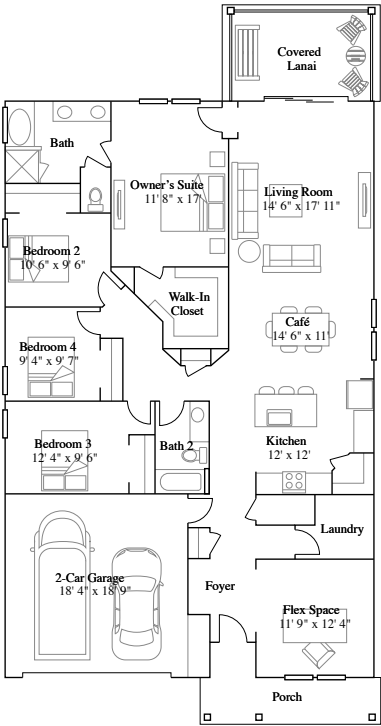


Exterior HP

CHARLE

4 bd . 2 ba . 2,124 ft²

1st Floor



Available Exteriors



Exterior HA

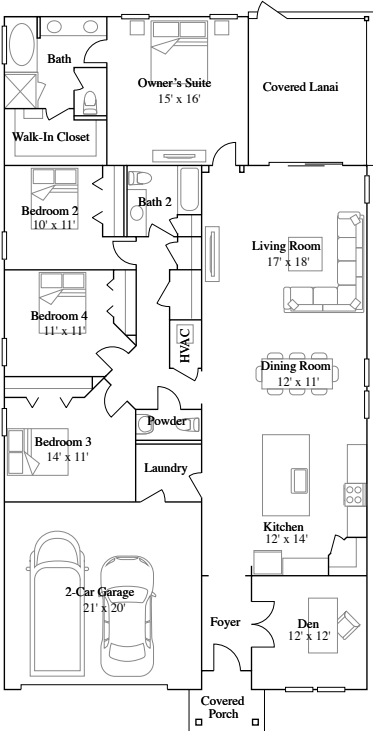


Exterior HB

SIERRA

4 bd . 2 ba . 1 half ba . 2,295 ft²

1st Floor



Available Exteriors



Exterior HA



Exterior HB

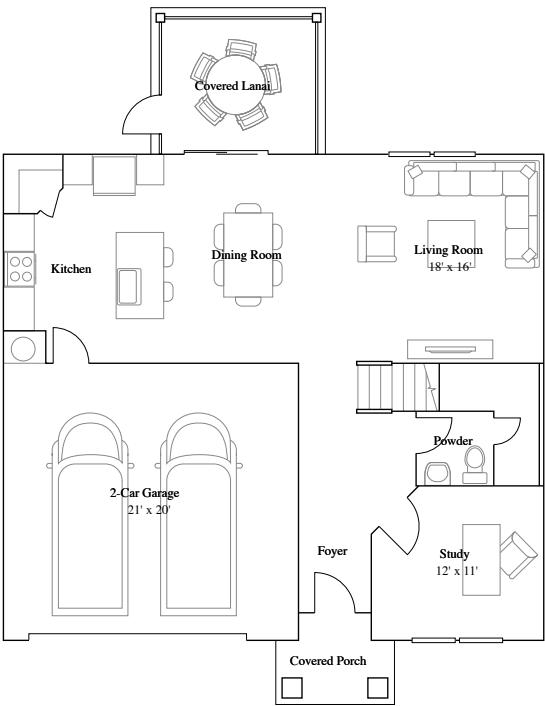


Exterior HP

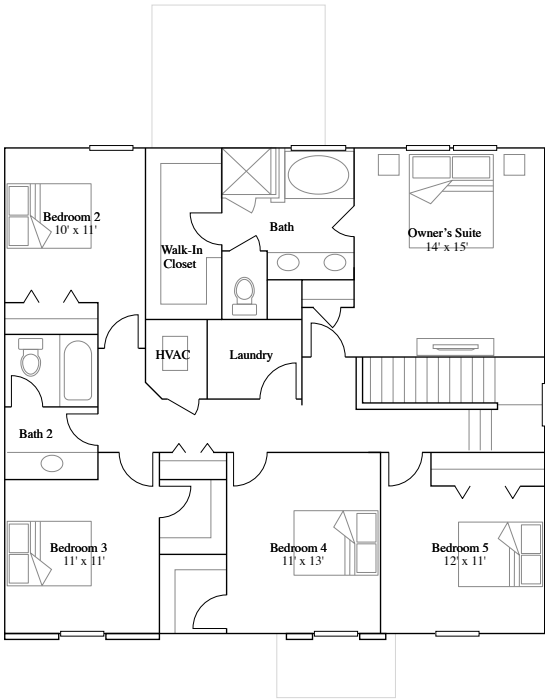
BRIO

5 bd . 2 ba . 1 half ba . 2,358 ft²

1st Floor



2nd Floor



Available Exteriors



Exterior HA

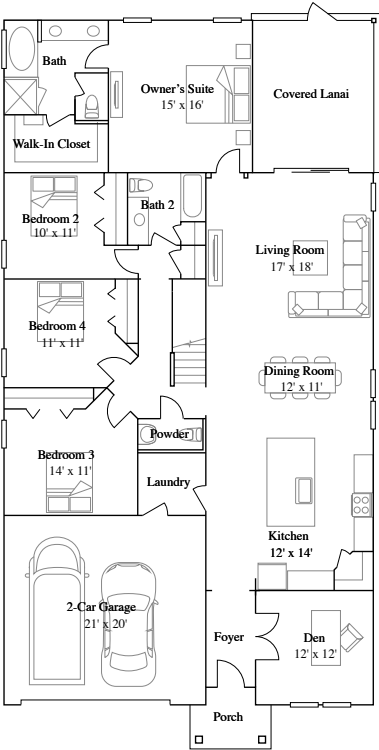


Exterior HB

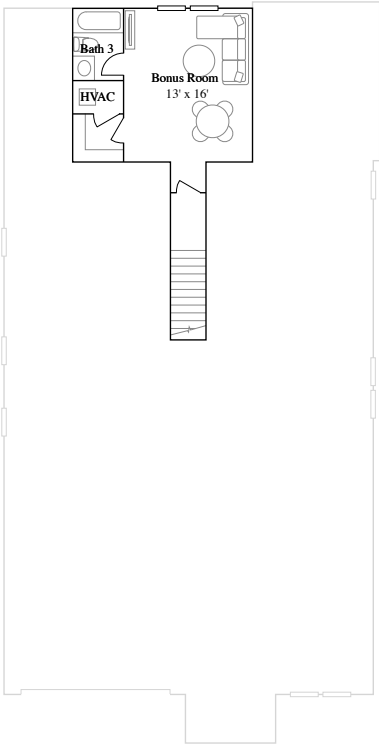
SIERRA BONUS

4 bd . 3 ba . 1 half ba . 2,663 ft²

1st Floor



2nd Floor



Available Exteriors



Exterior HA



Exterior HB



Exterior HP

Silver Landing 63s

Silver Landing 63s is a collection of new single-family homes for sale at SilverLeaf, a masterplan community in St. Augustine, FL, with more than 8,500 acres of thoughtfully designed neighborhoods, commercial space, trails and over 3,500 acres of natural preserves. From resort-style amenities to nearby shopping and entertainment opportunities, the area also boasts quality A-rated schools to create a perfect family-friendly environment.

Floorplans

TIVOLI

4 bd . 3 ba . 2,267 ft²

PRINCETON

4 bd . 2 ba . 2,268 ft²

MEDALLION

4 bd . 3 ba . 2,654 ft²

KATALINA

4 bd . 3 ba . 2,683 ft²

LEEWARD

4 bd . 3 ba . 2,957 ft²

MEDALLION BONUS

4 bd . 4 ba . 3,152 ft²

KATALINA BONUS

4 bd . 4 ba . 3,202 ft²

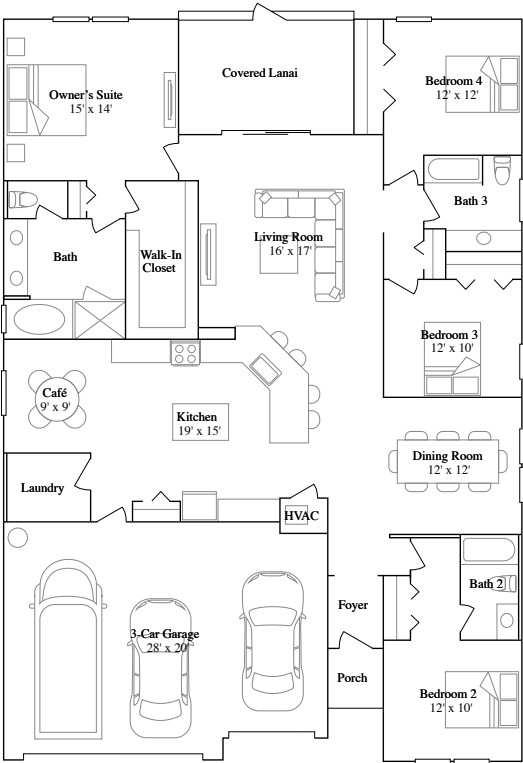
KINGSLEY III

5 bd . 4 ba . 3,381 ft²

TIVOLI

4 bd . 3 ba . 2,267 ft²

1st Floor



Available Exteriors



Exterior HA

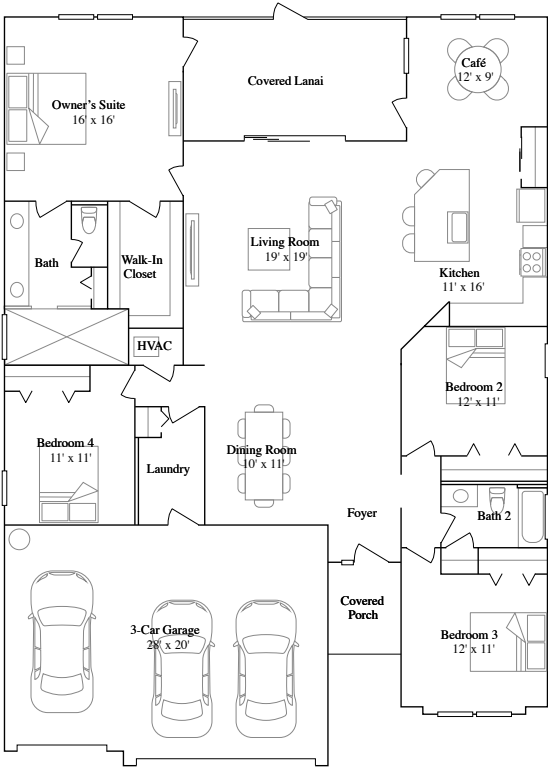


Exterior HB

PRINCETON

4 bd . 2 ba . 2,268 ft²

1st Floor



Available Exteriors



Exterior HA

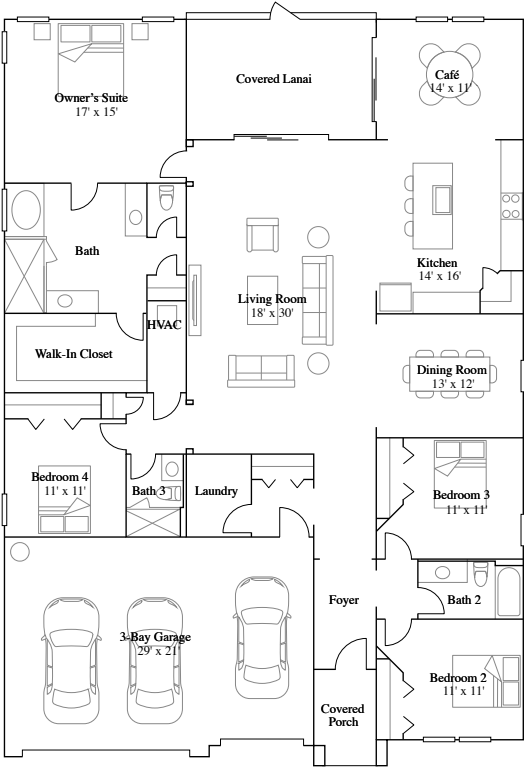


Exterior HB

MEDALLION

4 bd . 3 ba . 2,654 ft²

1st Floor



Available Exteriors



Exterior HA

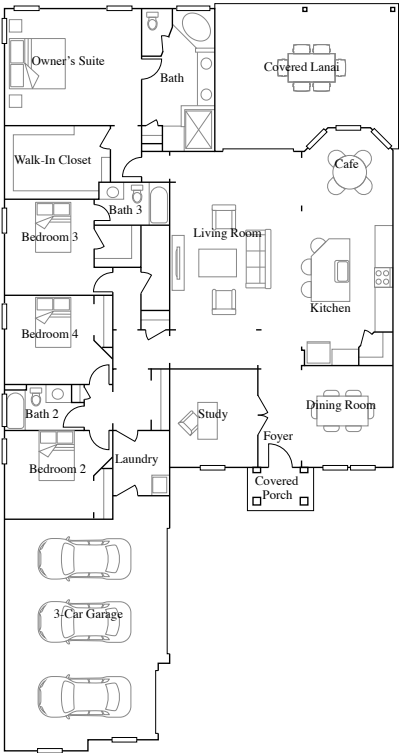


Exterior HB

KATALINA

4 bd . 3 ba . 2,683 ft²

1st Floor



Available Exteriors



Exterior HA

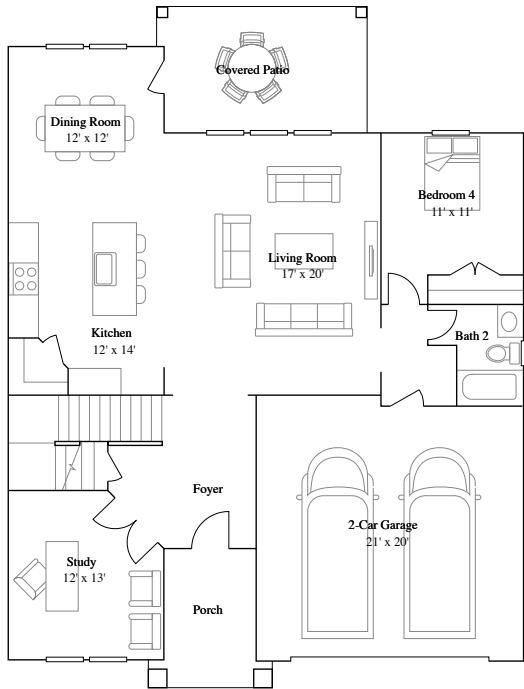


Exterior HB

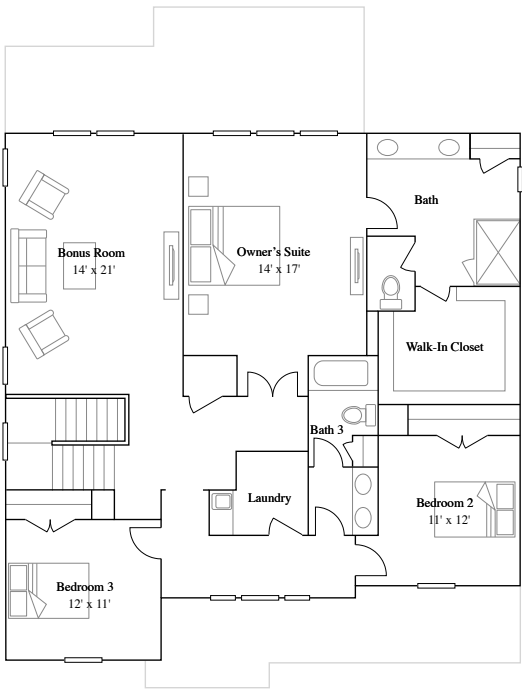
LEEWARD

4 bd . 3 ba . 2,957 ft²

1st Floor



2nd Floor



Available Exteriors



Exterior A

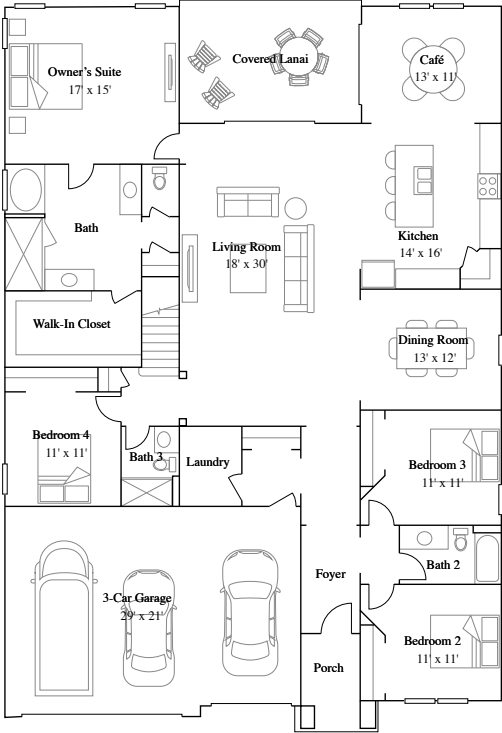


Exterior B

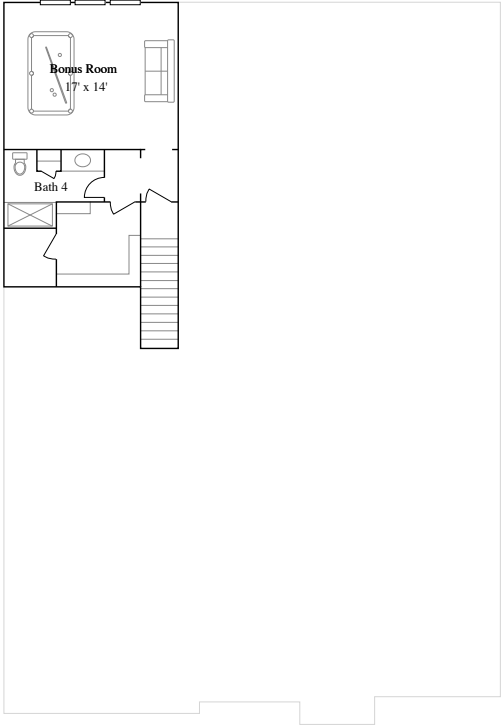
MEDALLION BONUS

4 bd . 4 ba . 3,152 ft²

1st Floor



2nd Floor



Available Exteriors

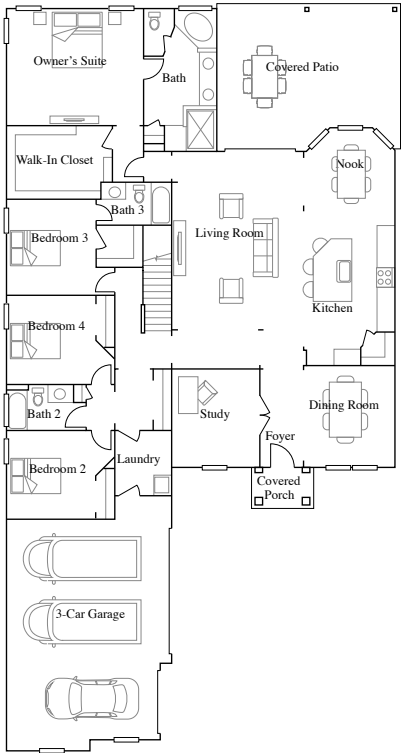


Exterior HA

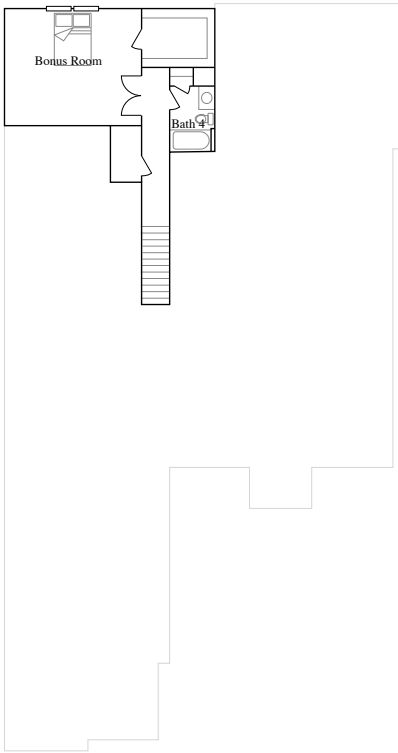
KATALINA BONUS

4 bd . 4 ba . 3,202 ft²

1st Floor



2nd Floor



Available Exteriors



Exterior HA

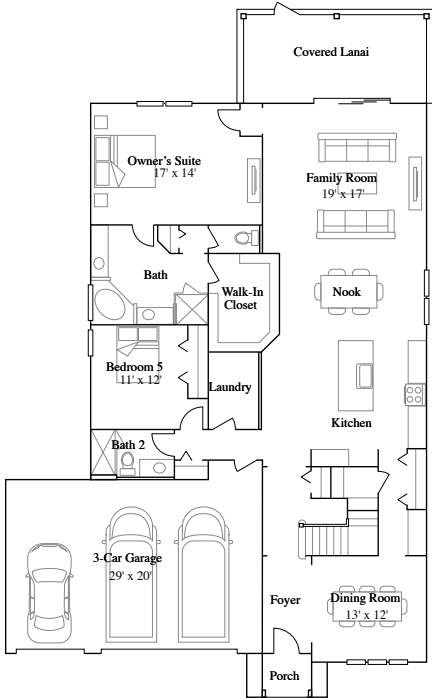


Exterior HB

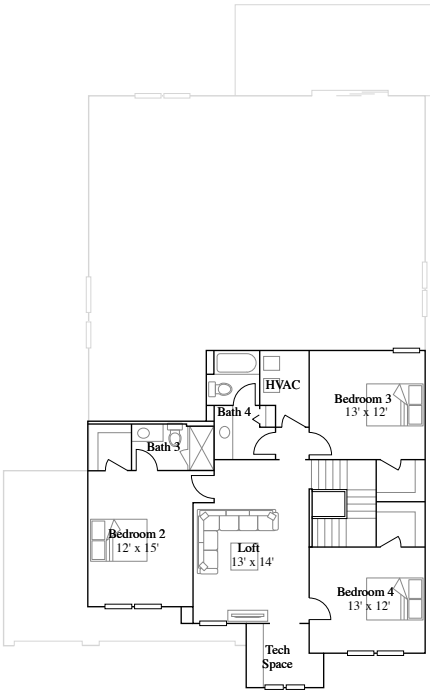
KINGSLEY III

5 bd . 4 ba . 3,381 ft²

1st Floor



2nd Floor



Available Exteriors



Exterior HA



Exterior HB

Everything included

See all you can enjoy when everything's included

All features and products can vary by collection. View **SilverLeaf** to see offerings by collection. Currently viewing the **Silver Meadows Villas**

Kitchen

Frigidaire® stainless steel appliance package includes a range cooktop with a built-in microwave and refrigerator

The undermount stainless steel sink pairs with a designer-selected faucet with pull-out spray

Durable and stylish quartz countertops grace the kitchen and center island

Frigidaire® stainless steel range

Frigidaire®; stainless steel microwave oven

Frigidaire® stainless steel side-by-side refrigerator with water and ice dispenser

Quartz countertops

Amerisink® stainless steel single-basin sink

Stainless steel faucet with pull-down spray

42" recessed panel cabinetry

LED recessed lighting

ENERGY STAR® dishwasher

Owners Suite

Shower and bathtubs with 12"x24" wall tile surround

Walk-in closet with mesh shelving

Quartz countertops

Plate-glass vanity mirror in all bathrooms (per plan)

Moen® bath fixtures and faucets

Double sinks at vanity

Walk-in shower with framed glass enclosure

Elongated comfort-height toilets with soft-close lids

Secondary Bathroom	Shower and bathtubs with 12"x24" wall tile surround
	Quartz countertops
	Plate-glass vanity mirror in all bathrooms (per plan)
	Water-saving elongated toilet with soft-close lids
	Moen® bath fixtures and faucets
	Shower and bathtub combination with tile surround
Laundry	Wire-mesh shelving
	Tile flooring
Interior	Ceramic tile flooring runs throughout the living room, kitchen and bathrooms
	9' ceilings on first floor
	Tile flooring in kitchen and bathrooms
Exterior	Paved walkway, driveway, entry and rear lanai with exterior door
	Sherwin-Williams® exterior paint
	Relaxing screened and covered lanai
	Low-maintenance vinyl windows
	Insulated fiberglass six-panel front door
	Eco-friendly landscape package
	Full yard programmable irrigation system
	Two exterior hose bibs
	LED recessed lighting

R-30 ceiling insulation

A screened lanai extends the home for outdoor entertainment and activities (per plan)

Connectivity

Wifi heat mapping (engineering)

Smart front door lock

Honeywell Home T6 Pro Z-Wave - smart thermostat

Ring Video Doorbell Pro

Energy Efficiency

Exterior air filtration damper

Programmable thermostats

Energy-efficient low-E windows

R-30 ceiling insulation

Energy-efficient water heater tank

Services

myLennar (online assistant to help through the homebuying process)

Lennar Mortgage (financial services)

Lennar Title (title services)

Lennar Insurance Agency (home insurance)

Limited one-year warranty on workmanship

Dedicated Customer Care service and program

24-hour emergency customer service

Find the home that’s right for you.

Prices and availability as of April 10, 2024. All subject to change.

Homesite	Price	Details	Plan	Address
0063	Priced at \$477,489	3 bd . 2 ba . 1,891 ft²	Topaz	64 Bevins Lane
0073	Priced at \$594,989	4 bd . 3 ba . 2,267 ft²	Tivoli	59 Bevins Lane
0072	Priced at \$636,489	4 bd . 3 ba . 2,657 ft²	Medallion	47 Bevins Lane
0030	Priced at \$527,494	4 bd . 3 ba . 2,028 ft²	TREVI	80 Simonson Run
0080	Priced at \$524,494	4 bd . 2 ba . 2,124 ft²	CHARLE	141 Bevins Lane
0079	Priced at \$552,994	4 bd . 2 ba . 1 half ba . 2,295 ft²	SIERRA	129 Bevins Lane
0029	Priced at \$609,489	4 bd . 3 ba . 1 half ba . 2,663 ft²	SIERRA BONUS	90 Simonson Run
0548	Low \$500K	4 bd . 3 ba . 2,028 ft²	TREVI	114 Silver Willow Court
0145	Priced at \$602,489	4 bd . 3 ba . 2,267 ft²	TIVOLI	504 OAKLAWN COURT
0155	Priced at \$602,989	4 bd . 2 ba . 2,268 ft²	PRINCETON	393 OAKLAWN COURT

Plan your visit

Community information

Location	Hours		Phone
104 Silver Willow Court St Augustine, FL 32092	Mon	12:00 - 6:30	904-483-9099
	Tue	9:30 - 6:30	
	Wed	9:30 - 6:30	
	Thu	9:30 - 6:30	
	Fri	9:30 - 6:30	
	Sat	9:30 - 6:30	
	Sun	11:00 - 6:30	

HOA & Tax information

Aprox monthly HOA fees - \$200
Approximate tax rate - 1.25%

Why Lennar

We take pride in providing the easiest way to buy a home.

Where you want to live

We understand how you want to live, and create homes in communities in some of the most sought-after cities across the country.

A simpler way to buy

Our family of companies can assist you with your mortgage, title and insurance needs - allowing you to save time and money.

Something for everyone

We understand homebuilding, and people. Our homes cater to a variety of lifestyles, and reflect the culture and region in which they're built.

Features, amenities, floor plans, elevations, and designs vary and are subject to changes or substitution without notice. Items shown are artist's renderings and may contain options that are not standard on all models or not included in the purchase price. Availability may vary. Sq. ft. and dimensions are estimated; actual sq. ft. and dimensions will differ. Garage/bay sizes may vary from home to home and may not accommodate all vehicles. This is not an offer in states where prior registration is required. Void where prohibited by law. Copyright © 2021 Lennar Corporation. Lennar and the Lennar logo are U.S. registered service marks or service marks of Lennar Corporation and/or its subsidiaries. Seller's Broker: Lennar Realty, Inc. Construction License(s): CGC1518166. Date 1/22



Copyright © 2023 Lennar Corporation. All right reserved.

Printed on 4/10/2024